

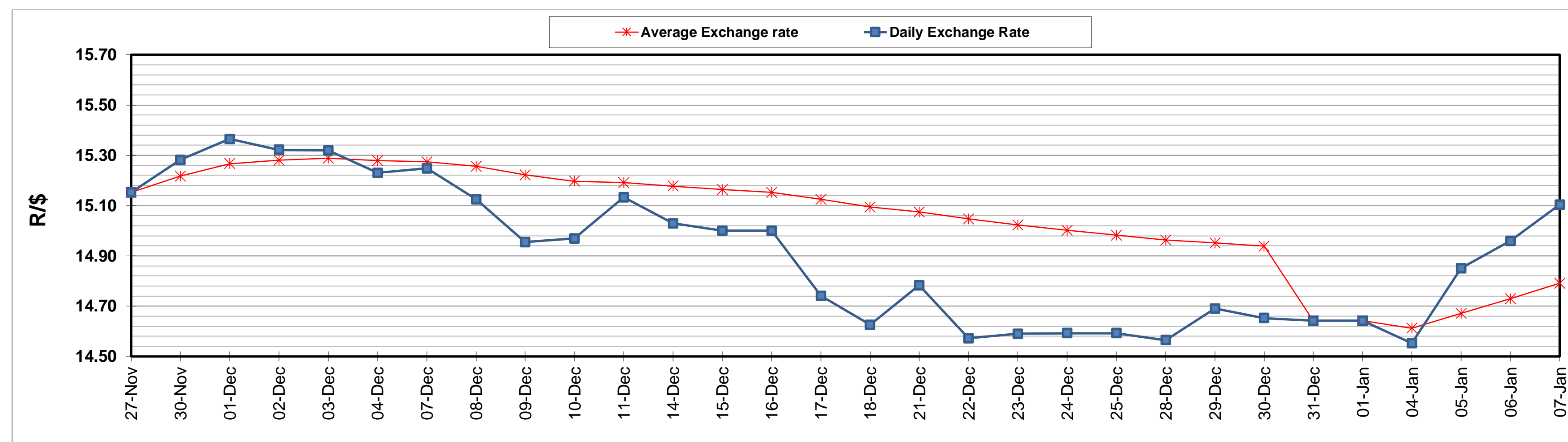
	PETROL 95 ULP	PETROL 93 ULP & LRP	DIESEL 0.05%	DIESEL 0.005%	ILL. PAR.
GAUTENG PUMP PRICE (SA c/l) AS FROM 06/01/2021	1,486.000	1,469.000	-	-	-
WHOLESALE PRICE (SA c/l) AS FROM 06/01/2021	-	-	1,300.420	1,301.820	739.688
SINGLE NATIONAL MAXIMUM RETAIL PRICE	-	-	-	-	930.000
BASIC FUEL PRICE - 07/01/2021 (SA c/l)	589.885	584.617	584.670	587.105	574.901
PRESS RELEASE CONTRIBUTION TO BFP 06/01/2021 - 07/01/2021 (SA c/l)	519.170	512.170	541.630	543.030	527.128
UNIT OVER/(UNDER) RECOVERY - 07/01/2021 (SA c/l)	(70.715)	(72.447)	(43.040)	(44.075)	(47.773)
AVERAGE BASIC FUEL PRICE 31/12/2020 - 07/01/2021	558.344	552.458	560.833	563.072	548.158
AVERAGE UNIT OVER/(UNDER) RECOVERY 31/12/2020 - 07/01/2021	(65.841)	(68.954)	(55.870)	(56.042)	(57.697)

ANALYSIS MOVEMENT OF AVERAGE OVER/(UNDER) RECOVERY

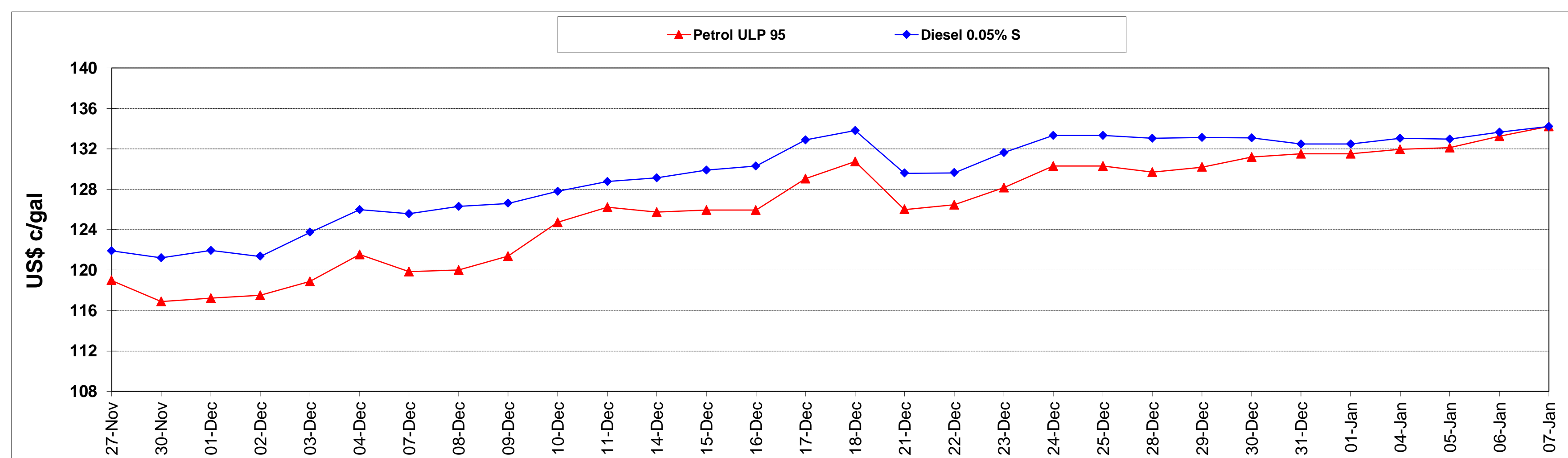
	PETROL 95	PETROL 93	DIESEL 0.05%	DIESEL 0.005%	ILL. PAR.
- MOVEMENT IN INTERNATIONAL PRODUCT PRICES	(71.405)	(74.460)	(61.459)	(61.653)	(63.159)
- MOVEMENT IN EXCHANGE RATE	5.564	5.505	5.589	5.611	5.462
AVERAGE UNIT OVER/(UNDER) RECOVERY 31/12/2020 - 07/01/2021	(65.841)	(68.954)	(55.870)	(56.042)	(57.697)

R/\$ EXCHANGE RATE - (R/\$15.1035 - 07/01/2021)

EXCHANGE RATE USED IN BASIC FUEL PRICE



INTERNATIONAL PRODUCT PRICES OF BASKET USED IN BASIC FUEL PRICE



BASIC FUEL PRICE IN SA CENTS PER LITRE

